



OLIVER BURN

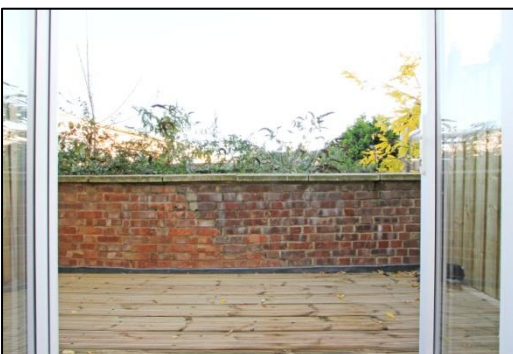


**Flat B**  
**143a Coldharbour Lane**  
**SE5 9NU**  
**£330,000**  
**Leasehold**



## **Stunning Newly Refurbished One Bedroom Flat**

- ◆ One Double Bedroom
- ◆ Stylish Kitchen With Granite Work Surface
- ◆ Renovated To High Standard
- ◆ Solid Walnut Flooring
- ◆ Private Roof Terrace
- ◆ Video Phone Entry
- ◆ Chain Free



*EARLY VIEWING IS RECOMMENDED, BUT STRICTLY BY  
APPOINTMENT WITH OLIVER BURN ;  
0207 274 3333 [www.OliverBurn.com](http://www.OliverBurn.com)*





OLIVER BURN

5 Half Moon Lane,

## Property Details

A beautifully presented one bedroom, first floor flat, situated in this convenient location, close to the superb amenities of both Brixton & Camberwell.

This stunning flat has been completely refurbished and benefits from a high spec finish and is fully eco friendly compliant with recent regulations including high quality soundproofing.

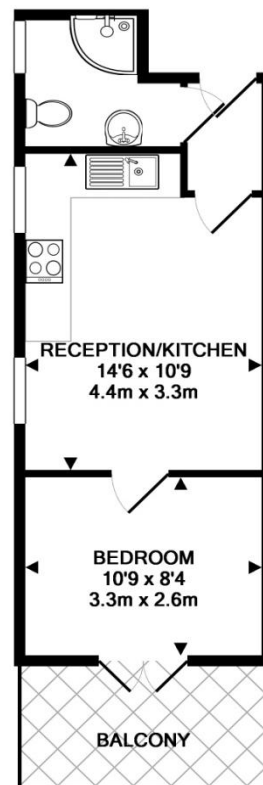
Additionally there are Granite work surfaces, walnut flooring and high quality carpet and a lovely private terrace.

The flat is conveniently situated within close proximity to well connected train stations such as Loughborough Junction, Denmark Hill and Brixton tube & mainline Station, all with speedy links to West End and City. This property is offered to the market with the benefit of no onward chain.



TOTAL APPROX. FLOOR AREA 295 SQ.FT. (27.4 SQ.M.)

For illustrative purposes only. Decorative finishes, fixtures, fittings and furnishings do not represent the current state of the property. Measurements are approximate. Not to scale  
Made with Metropix ©2014



Every attempt is made to ensure accuracy, however measurements are approximate. These particulars shall not be construed as an offer, contract or any part thereof are made without warranties on the part of Oliver Burn Residential Ltd, its employees or its clients. Intending purchasers must verify all statements by inspection or otherwise.

0207 274 3333

[www.OliverBurn.com](http://www.OliverBurn.com)

5 Half Moon Lane, Herne Hill, SE24 9JU